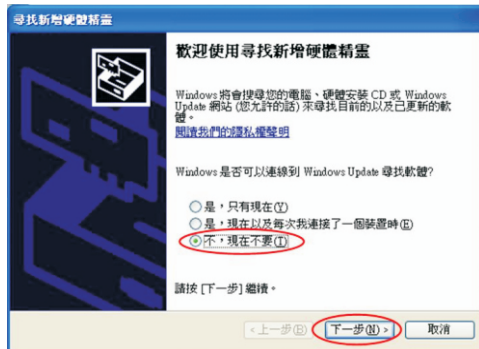


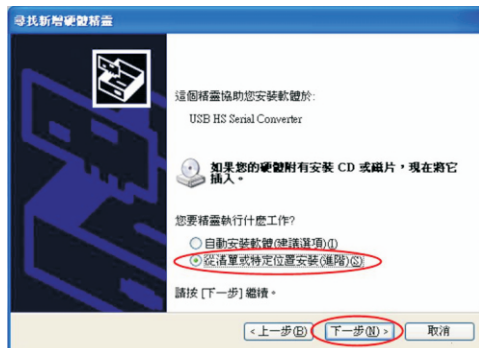
FT232BL Installation

1. The computer will show an interface as pic. 1, when the product plugged, Such as pic.1



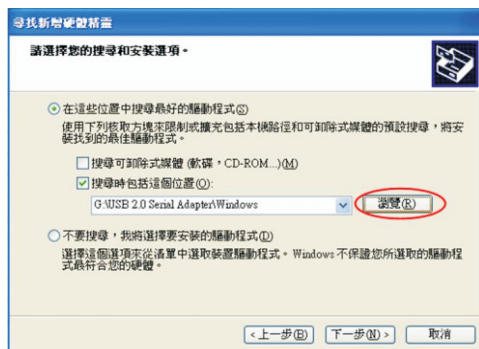
Picture(1)

2. Select the "Installation from the list or the specifically location", then click the "NEXT", such as pic.2



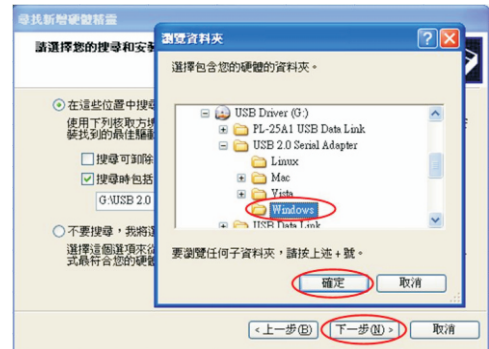
Picture(2)

3. Click the "BROWSE", such as pic.3



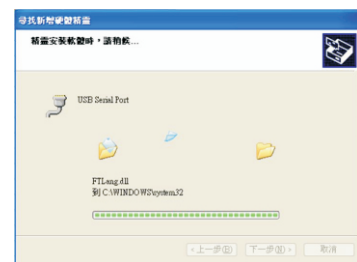
Picture(3)

4. Select "USB 2.0 Serial Adpater" of CD, click the "Windows" of the "Vista", click the "CONFIRM", then click the "NEXT".

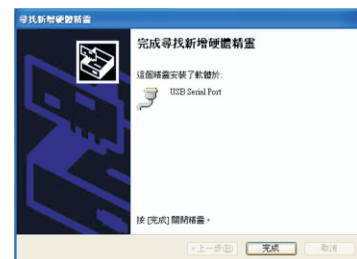


Picture(4)

5. Click the "FINISH", the driver of the conduct is finished, such as pic.6

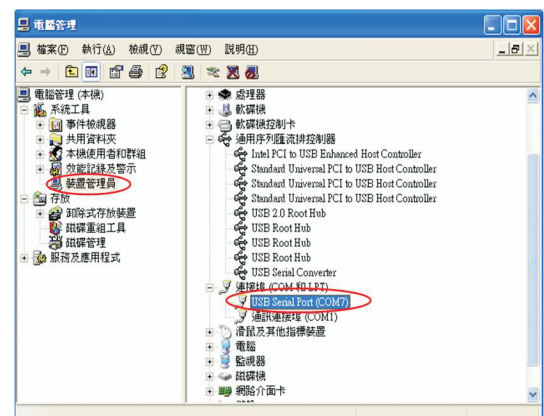


Picture(5)



Picture(6)

6. "MY COMPUTER"--click the "MANAGE" on right--click the "EQUIPMENT MANAGER"--display "USB Serial Port", such as pic.7



Picture(7)